

## PEFC promotes Sustainable Forest Management and helps protect the world's forests.

- ✓ **PEFC (Programme for Endorsement of Forest Certification)** is an international non-profit, non-governmental organisation dedicated to promoting Sustainable Forest Management through independent third-party certification.
- ✓ **PEFC is a federal organisation** that works by endorsing national forest certification systems and has recognised certification systems in more than 43 countries. These account for over 300 million hectares of certified forests, making PEFC the world's largest forest and wood product certification system.
- ✓ **The PEFC label** provides assurances that the wood, paper and packaging products on which it appears, come from responsibly managed forests.

## PEFC's distinctive 'two trees' logo transcends language barriers making it a truly global brand.



### PEFC UK Limited

Sheffield Technology Parks  
Cooper Buildings, Arundel Street  
Sheffield S1 2NS

t 0114 307 2334

e [info@pefc.co.uk](mailto:info@pefc.co.uk)

w [www.pefc.co.uk](http://www.pefc.co.uk)

# PEFC IN A NUTSHELL

The world's fastest growing  
forest certification scheme



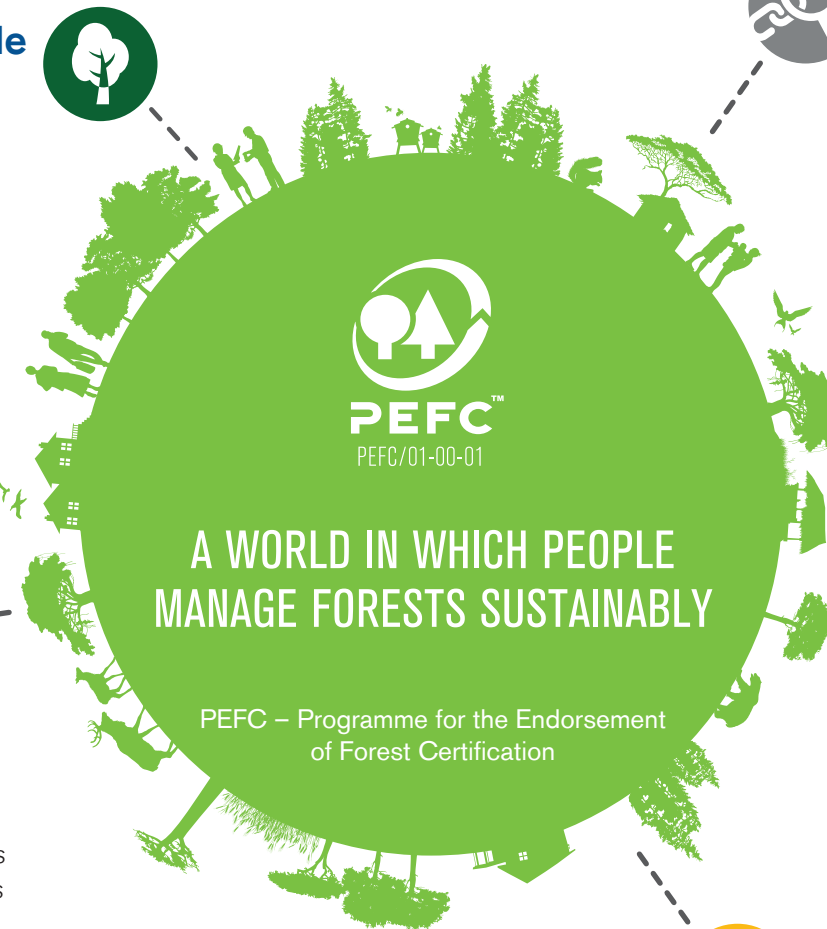
# PEFC: Your assurance of responsible sourcing

## Sets the standard for sustainable forest management

- ✓ **Globally recognised** Sustainability Benchmarks adapted to local conditions
- ✓ **Safeguard** biodiversity, ecosystems and help protect the climate
- ✓ **Support** forest-dependent livelihoods and local communities
- ✓ **Robust, pragmatic and cost-effective**

## Delivering Social Value

- ✓ **Created in 1999**, to enable small, family and community forest owners to demonstrate sustainable forest management
- ✓ **People-centric**, mindful of the specific needs of smallholders, workers and local communities
- ✓ **An alliance** of national forest certification systems



## Offers global impact and availability

- ✓ **60%** of all certified forests worldwide are PEFC-certified \*\*
- ✓ **Over 750,000 forest owners** covered by PEFC certification \*\*
- ✓ **18,600 Chain of Custody** certified companies in **70 countries** \*\*
- ✓ **Tailored local customer service** through **43 National members** \*\*

## Enables responsible supply chain management

- ✓ **Independent and impartial**, strictly separating standard-setting, certification and accreditation processes
- ✓ **Transparent and traceable**, third party certification ensures that the certified wood contained in a product comes from sustainably managed forests

## Recognised around the world

- ✓ **Acceptance** in public and private procurement policies
- ✓ **Global organisations and companies use PEFC** as a benchmark for sustainable forest management
- ✓ **Consumers look for the labels and trust them:**
  - 80% want companies to use them \*
  - 1 in 5 know the PEFC label \*

**Choose PEFC**

Caring for our forests  
globally and locally

Discover more about PEFC at [www.pefc.org](http://www.pefc.org)